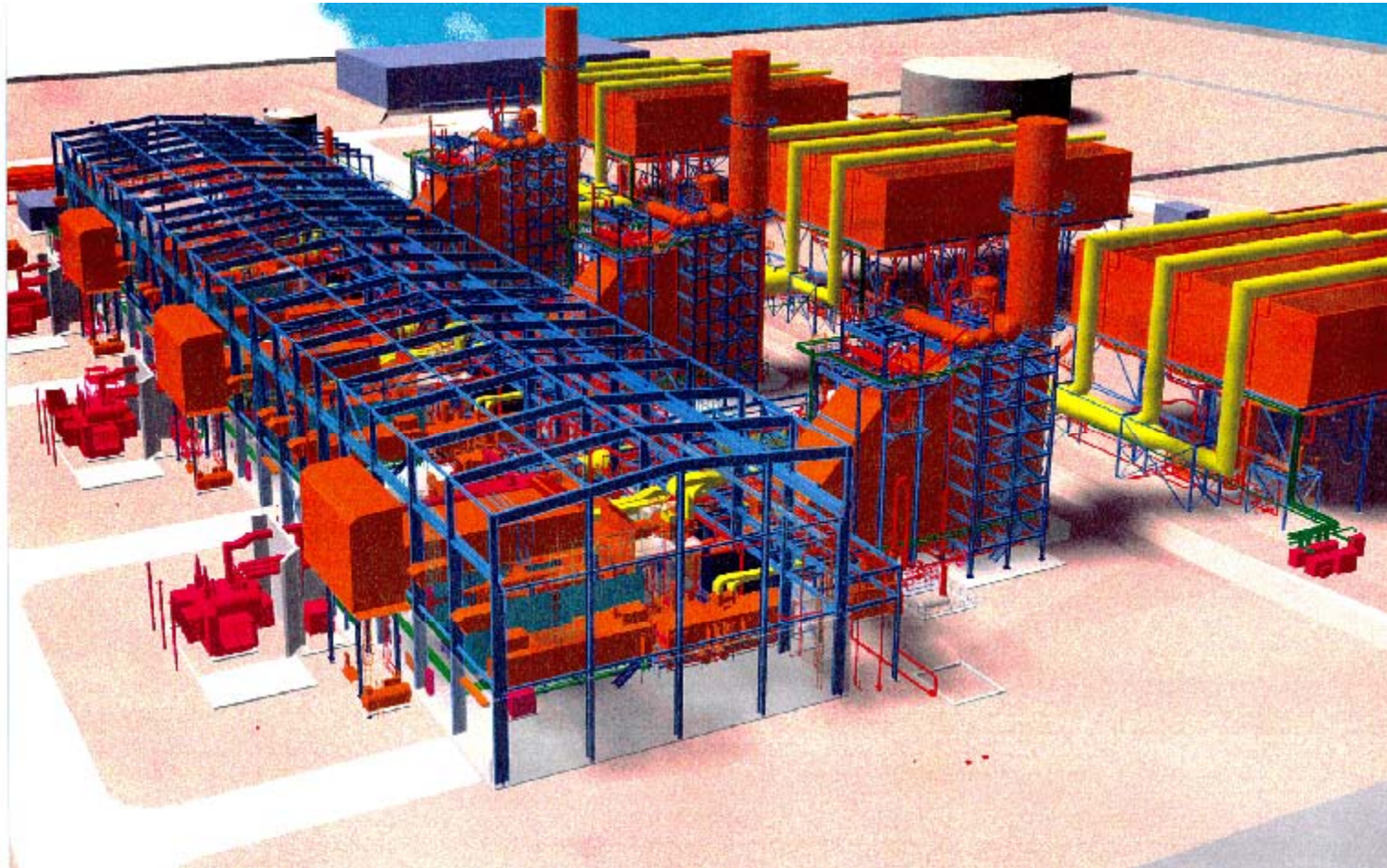




DERWICK ASSOCIATES S.A.

GE Frames 7FA





DERWICK ASSOCIATES S.A.

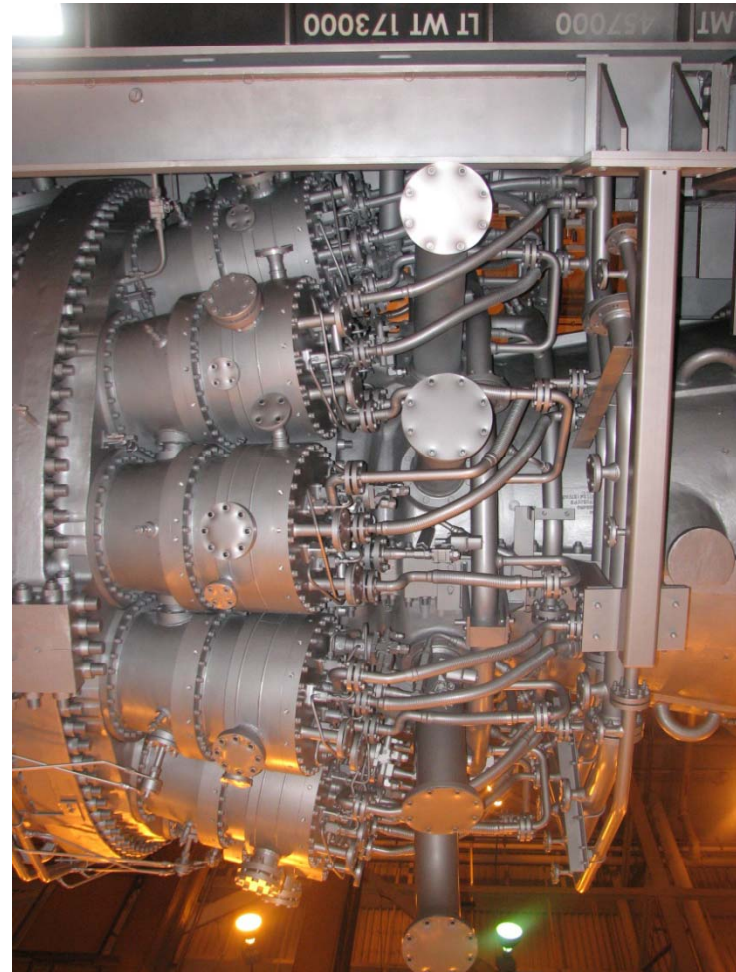
GE-Frame FA

- **Simple Cycle Performance**
- **Serial Number** 298957-298958-298959
- **Output** 171.7 MW
- **Heat Rate** 9,360 Btu/kWh (9,873 kJ/kWh)
- **Pressure Ratio** 16.0:1
- **Mass Flow** 981 lb/sec (445 kg/sec)
- **Turbine Speed** 3600 rpm
- **Exhaust Temperature** 1,114°F (601°C)
- **Model Designation** PG7241FA
- **Fuel Consumption**
 - 272 (Liters/Mw-hr)
 - 11,572 (Gallons/hr)
 - 1,559,591 (Cubic-Feet/hr)
- **Combined Cycle Performance**
- **60 Hz (S107FA)** **60 Hz (S207FA)**
- **Net Plant Output** 262.6 MW 529.9 MW
- **Heat Rate** 6090 Btu/kWh (6,424 kJ/kWh) 6040 Btu/kWh (6,371 kJ/kWh)
- **Net Plant Efficiency** 56.0% 56.5%
- **GT Number & Type** 1 x MS7001FA 2 x MS7001FA

DERWICK

DERWICK ASSOCIATES S.A.

GE Frame 7FA



GE Frame 7FA Location

